



VINNO Technology (Suzhou) Co., Ltd.
Dushu Alliance, NO.27 Xinfu Road, Suzhou Industrial Park, 215123, China
Tel: +86 512 62873806
Fax: +86 512 62873801
Email: vinno@vinno.com
Website: www.vinno.com

VINNO reserve the rights to revise the technical specification if needed.



VINNO E20
Slim, Smart, Super

VINNO
VISION IN INNOVATION

Innovative Platform , State of the Art Techonology



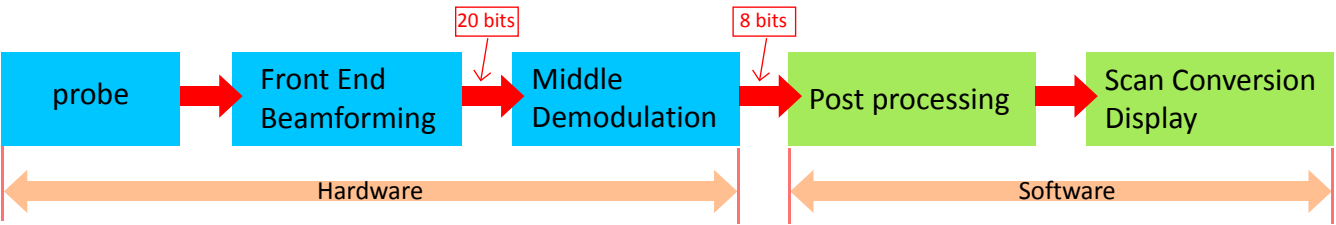
VINNOE20

E20 is fully featured in a slim and compact solution. Its utility and mobility fits in almost any clinical application. Its unique 3D/4D function delivers complete obstetric solution.

- » Innovative platform, State of the art technology
- » Super image quality, Smart experience
- » Slim and compact design, High efficient connectivity

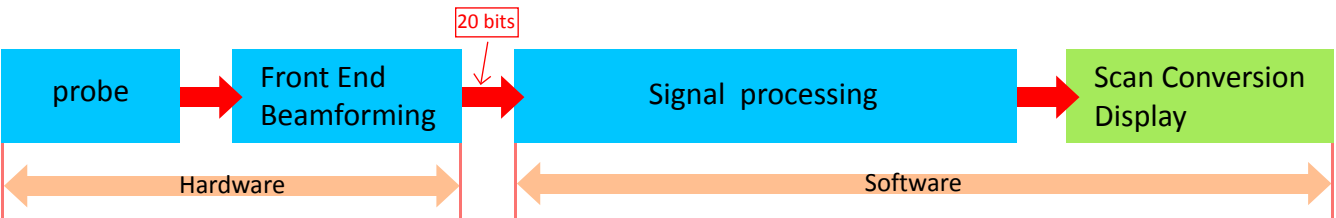
Innovative RF Ultrasound Platfrom

- Traditional Ultrasound Platform. Image data processing platform



- VINNO Innovative RF Ultrasound Platform

RF signal data processing platform for better resolution and definition



- ✓ Bigger data to compute for better image quality
- ✓ Non-linear demodulation to strong signal
- ✓ More accurate and higher step calculation

- ✓ Processing algorithm based on signal data, not image data
- ✓ Flexible algorithm on data processing

VTissue

With RF data, sound speed automatically match with certain tissue in order to be enhanced, such as Tendon.

VFusion

Compounding technology combined together with RF platform, VFusion helps to improve the image information, enhance contrast resolution and reduce the noises.

VSpeckle

Thanks to Vinno RF platform, VSpeckle can adaptively enhances contrast and reduces speckle, haze and other artifacts.

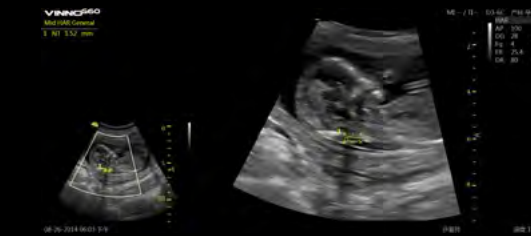
VINNC620

Leading 3D/4D Technology

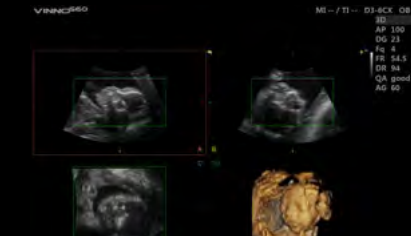
- » MCut
- » Magic Cut
- » Free View
- » Auto NT
- » Smart touch panel 3D/4D operation

Professional Cardiac Package

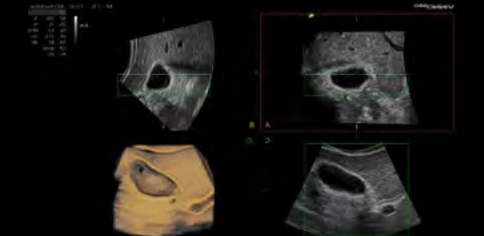
- » MAM (multi angle M mode)
- » TD (tissue doppler)
- » TVI (tissue velocity imaging)
- » Color M mode
- » CWD
- » Complete cardiac measurement package



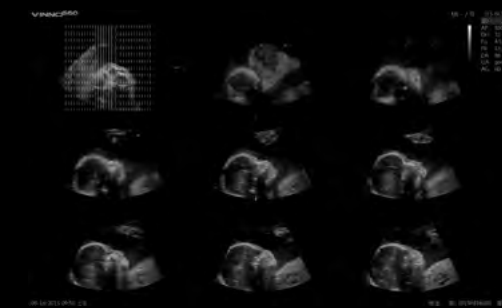
Auto NT



24 weeks fetal face-4D mode



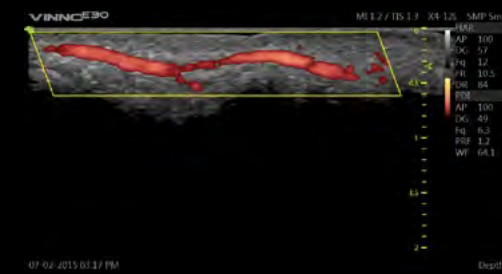
Gallbladder-4D Mode



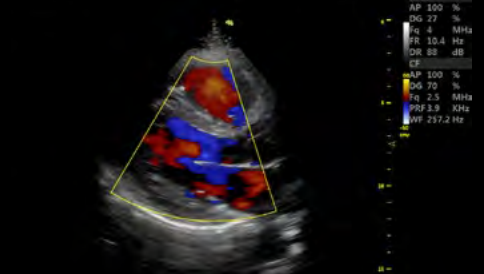
Fetal face-MCut



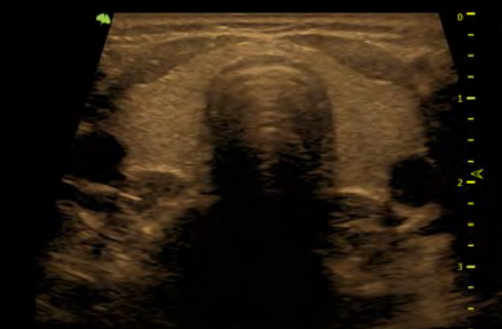
Inferior Vena-Bmode



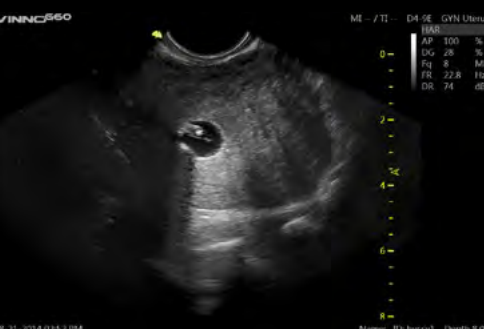
Finger Vessel-PDI Mode



Cardiac LV view-CFM



Thyroid-Tview-Chroma



HSG Under Ultrasound Guidance

VINNC^{E20}

Slim and Compact Design, High Efficient Connectivity

- » Super image quality, Smart experience
- » Swiveling and height adjustable operation panel
- » Articulating display with 19 inch LED screen
- » Pinless flat probe connection
- » Front USB ports position
- » Fast Connectivity : bluetooth/ WIFI / LAN/ DICOM3.0

