

VINNO8

Groundbreaking Design, Powerful Capabilities



VINNO

VINNO Technology (Suzhou) Co., Ltd.

5F, A Building, No.27 Xinfu Rd, Suzhou Industrial Park, 215123, China

Tel: +86 512 62873806

Fax: +86 512 62873801

Email: vinno@vinno.com

Website: www.vinno.com

VINNO reserves the rights to revise the technical specifications if needed.

VINNO

VINNO 8 brings premium performance without bounds. It combines advanced zone imaging technology, smart workflow, compact and light weight design all in one.

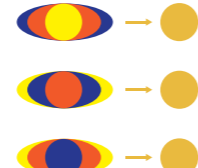
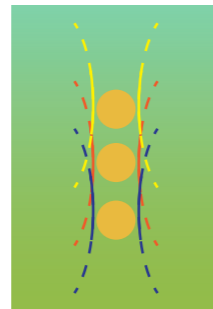
- Advanced Imaging Technologies
- Enhanced OB/GYN Application
- Extended Cardiac Application
- Discover More
- Innovative Design



Advanced Imaging Technologies

Zone Imaging

Zone Imaging technology acquires better image resolution and energy distribution in entire zone area through apodizing transmission in multiple frequency and instantaneous phase superposition



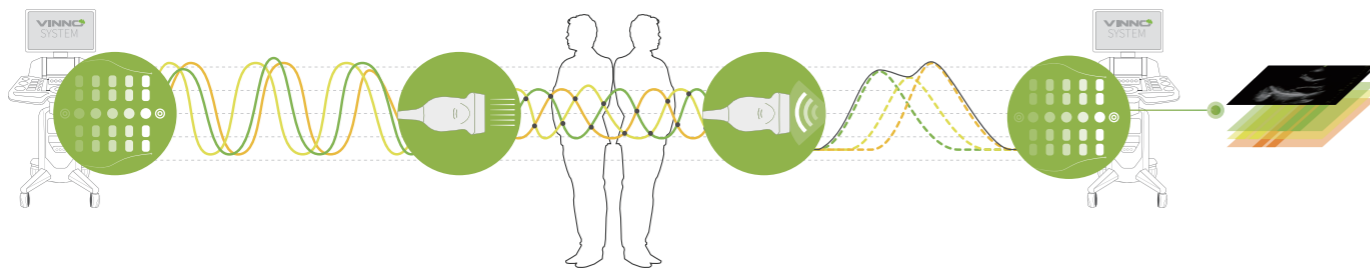
recognize , remove sidelobe

Partially Focusing (Traditional)

The energy distributes in dead focus area and attenuates in far field

Focusing In Entire Zone (Zone Imaging)

Smart beam shape control and uniform energy distribution in entire zone area



Transmit

Apodizing transmission in multiple frequency

Focus

Focus in entire zone area through instantaneous phase superposition

Receive

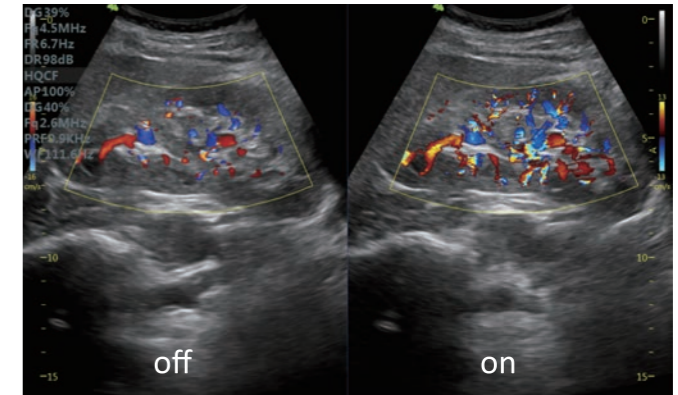
Compound in group phases via coherence technique

Imaging

Acquire the images after grid cross processing

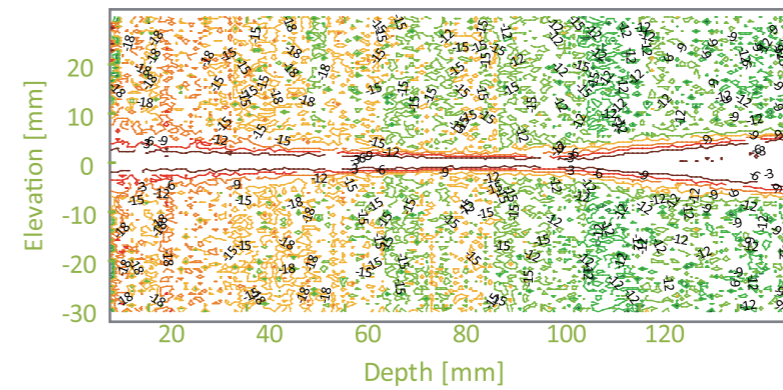
VFlow

VFlow is an advanced adaptive filter technology of color flow from VINNO to enhance the detective sensitivity of tiny blood flow

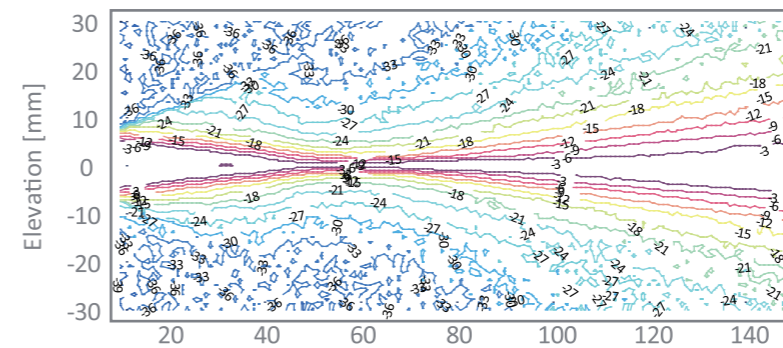


Pure Wave Probe Technology

Better orientation delivers better penetration to difficult person



Pure Wave Probe

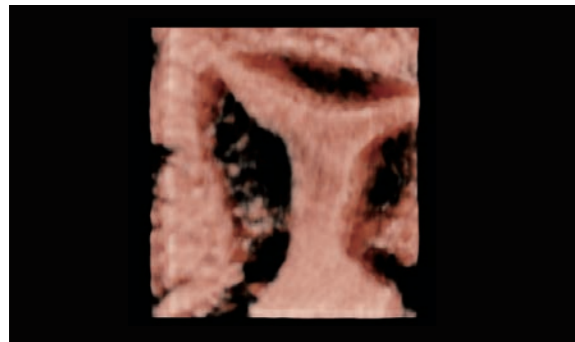


Traditional Probe

Enhanced OB/GYN Application

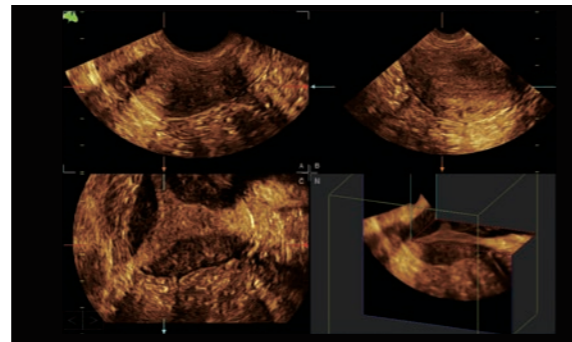
Volume Contrast Imaging(VCI)

Adjust slice thickness on 2D planes in rendering 3D or 4D mode to help enhance contrast resolution.



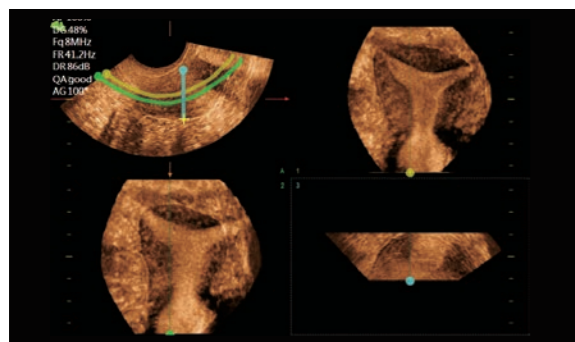
Niche View

Reconstruct a volume structure with multiplanar views, better reveal the spatial correlation of tissue structure.



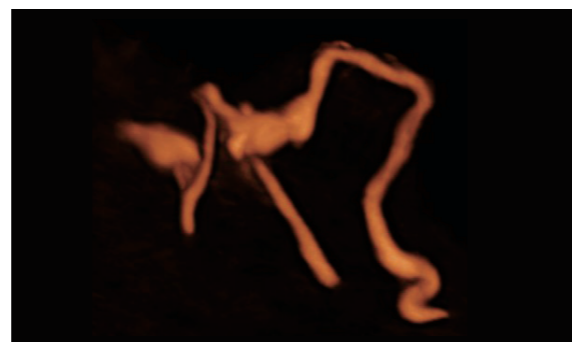
Multiline Free View

Obtain any plane from a volume data by simply drawing a line, curve, through a structure. This valuable technology enables views of even irregularly shaped structures not attainable in 2D imaging. Now we provide up to 3 Free view images displayed simultaneously



Hysterosalpingo Contrast Sonography(HSG)

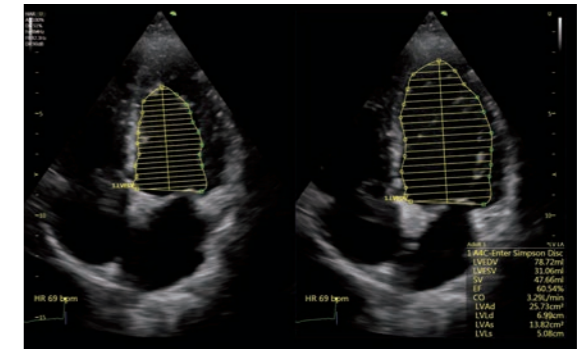
A simple and well-tolerated ultrasound procedure used to access the patency of the fallopian tubes and the abnormalities of the uterus and endometrium



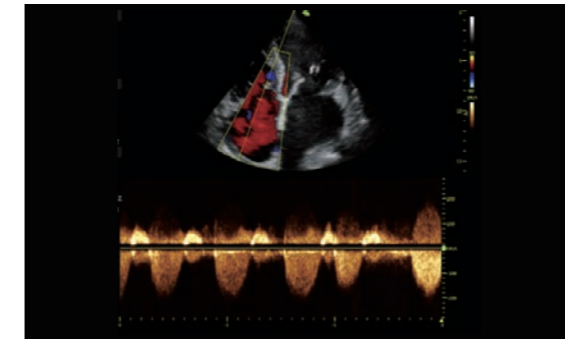
Extended Cardiac Application

Auto EF Measurement

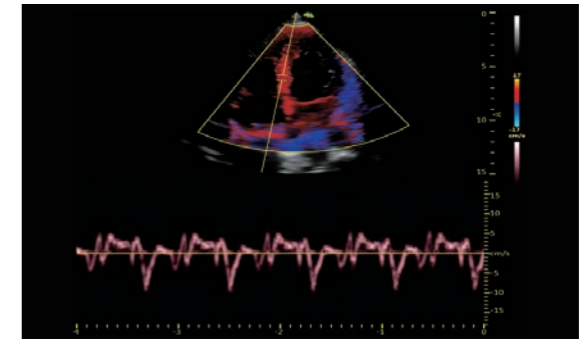
The system can calculate cardiac function of EF values through clicking three different key position instead of tracing the whole endocardium edge by manual which saves a lot of time.



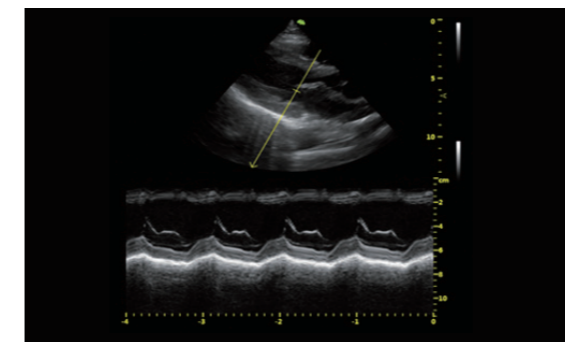
Various Imaging Modes for Accurate Cardiac Analysis



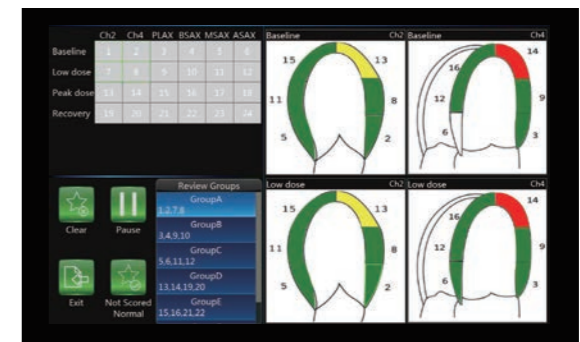
CW



TDI



Multi-Angle M Mode (MAM)



Stress Echo

Discover More

MSK Application

- **Simple To Learn**
Intuitive touch panel operation and built-in user manual for reference
- **Easy Compare**
Before and after exam comparison with Easy Compare function
- **Precise Imaging**
2-23Mhz frequency range enables you see from superficial to deep tissue
- **Accurate Biopsy Guidance**
Needle enhancement makes the needle tip more visible

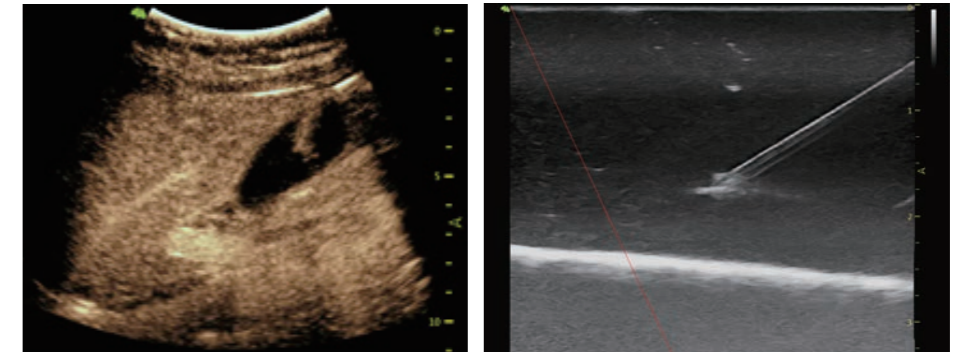


General Application

Easy Compare for patient exam follow up

Needle Enhancement is a nice tool to visualize the needle tip in radiology interventional application.

Contrast Bubble Imaging is good for organ edge delineation, monitoring blood perfusion in organs and recognition of lesion characterization.



Innovative Design



1、 Battery Pack

It can be the backup battery inside the system supports 2-hour working time for each pack.

2、 4 Probe Holders

3、 Physical Keyboard Bracket (optional)

4、 2 or 3-probe Extension (optional)

5、 Battery Indicator

The light indicator will be illuminated after the battery is set in place.

